

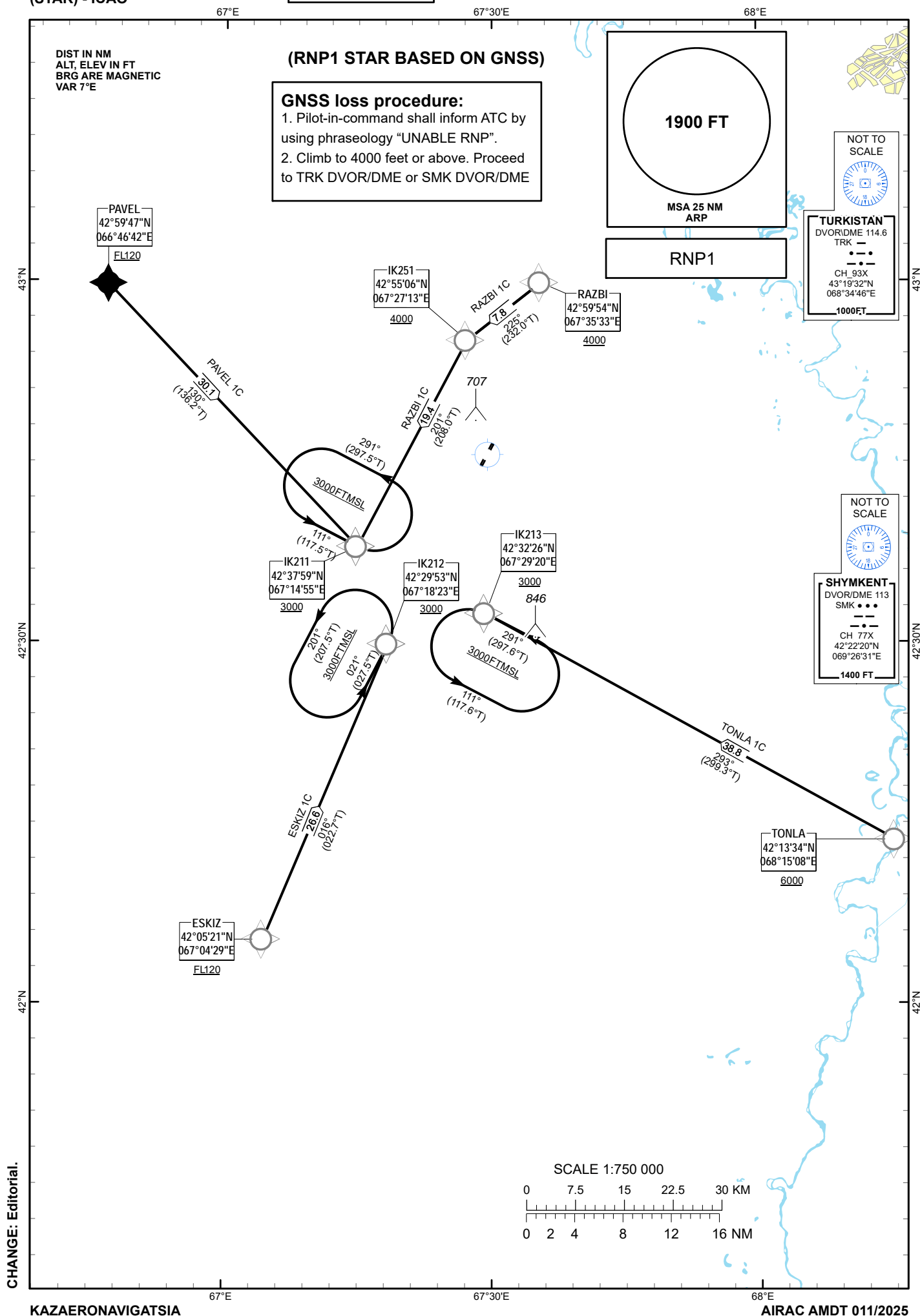
STANDARD ARRIVAL
CHART - INSTRUMENT
(STAR) - ICAO

TRANSITION ALTITUDE
10000 FT

TOWER FREQ
SEE NOTAM

ESKIZ 1C, PAVEL 1C,
RAZBI 1C, TONLA 1C

BOZHBAN
RWY 02R



TABULAR
DESCRIPTION

ESKIZ 1C RWY02R											
Serial Number	Path Descriptor	Waypoint Identifier	Fly - over	Course °M(°T)	Magnetic Variation(°)	Distance NM	Turn Direction	Altitude FT	Speed KT	VPA (°)	Navigation Specification
010	IF	ESKIZ	-		+6.54	-	-	+FL 120	-	-	RNP 1
020	TF	IK212	-	016(022.7)	+6.54	26.6	-	+3000	-	-	RNP 1

TABULAR
DESCRIPTION

PAVEL 1C RWY02R											
Serial Number	Path Descriptor	Waypoint Identifier	Fly - over	Course °M(°T)	Magnetic Variation(°)	Distance NM	Turn Direction	Altitude FT	Speed KT	VPA (°)	Navigation Specification
010	IF	PAVEL	-		+6.54	-	-	+FL 120	-	-	RNP 1
020	CF	IK211	-	130(136.2)	+6.54	30.1	-	+3000	-	-	RNP 1

TABULAR
DESCRIPTION

RAZBI 1C RWY02R											
Serial Number	Path Descriptor	Waypoint Identifier	Fly - over	Course °M(°T)	Magnetic Variation(°)	Distance NM	Turn Direction	Altitude FT	Speed KT	VPA (°)	Navigation Specification
010	IF	RAZBI	-		+6.54	-	-	+4000	-	-	RNP 1
020	TF	IK251	-	225(232.0)	+6.54	7.8	-	+4000	-	-	RNP 1
030	TF	IK211	-	201(208.0)	+6.54	19.4	L	+3000	-	-	RNP 1

TABULAR
DESCRIPTION

TONLA 1C RWY02R											
Serial Number	Path Descriptor	Waypoint Identifier	Fly - over	Course °M(°T)	Magnetic Variation(°)	Distance NM	Turn Direction	Altitude FT	Speed KT	VPA (°)	Navigation Specification
010	IF	TONLA	-		+6.54	-	-	+6000	-	-	RNP 1
020	TF	IK213	-	293(299.3)	+6.54	38.8	-	+3000	-	-	RNP 1

WAYPOINT COORDINATES

WPT	COORD		WPT	COORD	
ESKIZ	42°05'21.00"N	067°04'29.00"E	PAVEL	42°59'47.00"N	066°46'42.00"E
IK211	42°37'58.76"N	067°14'55.21"E	RAZBI	42°59'54.00"N	067°35'33.00"E
IK212	42°29'52.95"N	067°18'22.96"E	TONLA	42°13'34.00"N	068°15'08.00"E
IK213	42°32'25.74"N	067°29'19.63"E			
IK251	42°55'06.38"N	067°27'13.32"E			